



# MONTHLY MEMBERSHIP PROGRESS REPORT

District 321C1

Results as of: 4/30/2015

GMT: V S Kukreja

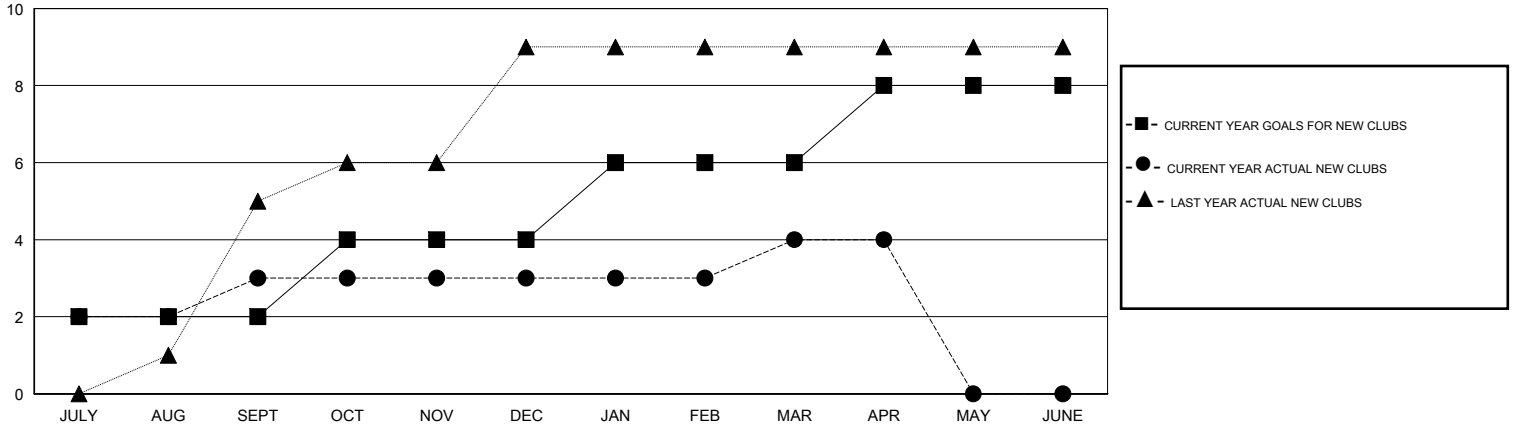
LOCATION INDIA

GMT CA 6

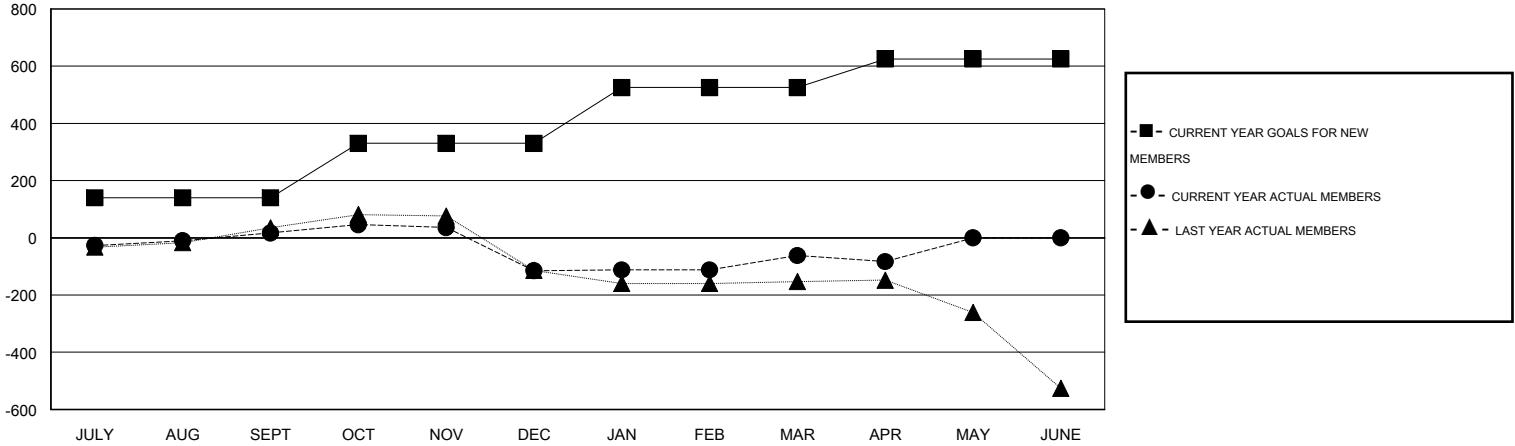
Clubs				
RESULTS FOR 2014-2015				
QUARTER	NEW CLUB GOAL	NEW CLUBS	DROPPED CLUBS	NET GAIN/LOSS
JULY/AUG/SEPT	2	3	0	3
OCT/NOV/DEC	2	0	6	-6
JAN/FEB/MAR	2	1	3	-2
APR/MAY/JUNE	2	0	0	0

Members				
RESULTS FOR 2014-2015				
QUARTER	NEW MEMBER GOAL	CHARTER AND NEW MEMBERS ADDED	DROPPED MEMBERS	NET GAIN/LOSS
JULY/AUG/SEPT	140	157	140	17
OCT/NOV/DEC	190	81	213	-132
JAN/FEB/MAR	195	173	120	53
APR/MAY/JUNE	100	32	53	-21

GOALS AND ACTUAL NEW CLUBS CUMULATIVE



GOALS AND ACTUAL MEMBERS CUMULATIVE



DROPPED CLUBS: 9
------------------

60 CLUBS OF 141 ADDED 1 OR MORE NEW MEMBERS

GENDER DISTRIBUTION	
MALE	3,221 (79.49%)
FEMALE	831 (20.51%)

DROPPED MEMBERS	
DECEASED	10
CLUB CANCELLED	189
OTHER	327
<b>TOTAL</b>	<b>526</b>

[CLICK HERE FOR HEALTH ASSESSMENT DATA](#)

FAMILY UNIT MEMBERS	1,445
HEAD OF HOUSEHOLD	688
NON-HEAD OF HOUSEHOLD	757